

**NAD**

**MUSIC BY DESIGN**



**AUDIO PRODUCT HIGHLIGHTS**



*Preamplifiers  
Preamplifier/Tuners  
Power Amplifiers  
Integrated Amplifiers  
Tuners  
Receivers*

Specifications are measured in accordance with EIA Standard RS-490 (IHF A-202) for amplifiers and ANSI-IEEE Standard 185 (1975), i.e. IHF T-200, for tuners. Amplifier measurements referred to 8 ohms are taken with the Speaker Impedance selector set to 8Ω (High). Measurements for 4 and 2 ohms are taken with Impedance selector at 4Ω (normal).

### 1000 Monitor Series Preamplifier

- TONE DEFEAT SWITCH FOR ACCURATE, FLAT RESPONSE
- DISCRETE PHONO PREAMP WITH MM/MC SWITCH FOR PHONO INPUT
- LOW IMPEDANCE OUTPUT DRIVES LONG CABLES OR PROFESSIONAL EQUIPMENT
- EXTREMELY LOW NOISE, 105 dB DYNAMIC RANGE IN EVERY STAGE
- GOLD-PLATED PHONO AND CD INPUT JACKS
- SEPARATE HEADPHONE AMPLIFIER

### 1300 Monitor Series Preamplifier

- SEMI-PARAMETRIC TONE CONTROLS WITH TONE BYPASS
- EXTERNAL PROCESSOR LOOP (EPL)
- 2-WAY TAPE DUBBING
- 8 TRANSISTOR DISCRETE PHONO PREAMP
- MM/MC SWITCH ON DISCRETE 8 TRANSISTOR PHONO PREAMP
- SWITCHABLE CARTRIDGE CAPACITANCE LOADING
- BASS EQ
- SWITCHABLE INFRASONIC FILTER
- SWITCHABLE NULL CIRCUIT

### 1600 Monitor Series Preamplifier/Tuner

- TONE DEFEAT
- EXTERNAL PROCESSOR LOOP (EPL)
- 2-WAY TAPE DUBBING
- MM/MC SWITCH ON DISCRETE 4 TRANSISTOR PHONO PREAMP
- FM BLEND
- REMOTE CONTROL, INCLUDING MOTOR DRIVEN VOLUME CONTROL
- GOLD-PLATED PHONO AND CD INPUT JACKS

## SPECIFICATIONS

CONTINUOUS AVERAGE POWER OUTPUT INTO 8 OHMS  
(Min. power per channel, 20Hz - 20kHz, both channels driven, with no more than rated distortion).  
Rated Distortion (THD 20Hz - 20kHz)  
Clipping power at 8 ohms, 1kHz  
(maximum continuous power per channel)  
IHF dynamic headroom at 8 ohms  
IHF dynamic power  
(maximum short term power per channel)

8 ohms  
4 ohms  
2 ohms

### PREAMPLIFIER SECTION

#### PHONO INPUT

Input impedance  
Input sensitivity, 1kHz  
Signal/Noise ratio  
(A-weighted with cartridge connected)

MM:  
MC:  
MM:  
MC:

47kΩ + 200pF  
1.5mV  
76dB ref. 5mV  
76dB ref. 95mV

47kΩ + 200pF  
1.3mV  
78dB ref. 0.5mV  
80dB ref. 5mV

47kΩ + 100pF  
1.3mV  
75dB ref. 5mV  
75dB ref. 0.5mV

THD (20Hz - 20kHz) and 1M dist  
RIAA response accuracy

<0.04%  
±0.5dB

<0.02%  
±0.3dB

<0.04%  
±0.5dB

### LINE LEVEL INPUTS (Tuner, CD, Aux, Video, Tape)

Input impedance  
Input sensitivity  
Signal/Noise ratio, A-weighted

20kΩ + 450pF  
80mV  
96dB ref. 0.5VB

100kΩ + 220pF  
80mV  
100dB ref. 0.5VB

50kΩ + 500pF  
80mV  
100dB ref. 0.5VB

Frequency response, 20Hz - 20kHz  
Infrasonic filter

±0.2dB  
-2dB at 12Hz/12dB/octave (switchable)

±0.3dB  
-3dB at 14Hz/18dB/octave (switchable)

±0.2dB  
-2dB at 12Hz/12dB/octave (fixed)

THD

<0.01%

<0.01%

<0.04%

### LINE LEVEL OUTPUTS

#### Output impedance

Pre Out  
Tape Source  
Phones

220Ω  
Source Z + 3200Ω  
120Ω

150Ω  
1000Ω  
68Ω (will drive all headphone impedances)

600Ω  
100Ω (buffered)  
180Ω

#### Maximum output level

Pre Out  
Tape  
Phones

>12V  
>10V  
>8V into 600Ω  
>250mV into 8Ω

>12V  
>12V  
>12V into 600Ω  
>12V into 600Ω; 1V into 8Ω

>10V  
>10V  
>8V into 600Ω  
>250mV into 8Ω

### FM TUNER SECTION

#### Input sensitivity

Mono, -30dB THD+N  
Mono, 50dB S/N  
Stereo, 50dB S/N  
Stereo, 60 dB S/N

11dBf (1.0μV/75Ω)  
36dBf (7.0μV/75Ω)

Capture ratio (45 and 65dBf)  
Selectivity  
Subcarrier suppression (19 and 38kHz)  
THD at 100% modulation

Alternate channel

Mono, 1kHz  
Stereo, 1kHz

<1.6dBf  
68dB  
60dB  
<0.1%  
<0.1%

Signal/Noise ratio (at 65dBf, IHF weighted)

Mono  
Stereo

82dB  
76dB

Frequency response, 30Hz - 15kHz  
Stereo separation, FM NR off

1kHz

±0.5dB  
50dB

### AM TUNER SECTION

Useable sensitivity  
Selectivity  
Image rejection  
Signal/Noise ratio (30% modulation, 50mV input)  
THD

5μV  
35dB  
50dB  
45dB  
0.5%

### PHYSICAL SPECIFICATIONS

Dimensions (Width x Height x Depth)

43.5 x 8.1 x 26.3cm  
(10.5 x 3.25 x 17.1in.)  
3.7kg (8lb 1oz)  
4.4kg (9lb 11oz)

43.5 x 7.5 x 25cm  
(17 x 3 x 10in.)  
4.3kg (9lb 8oz)  
5kg (11lb)

43.5 x 11 x 38.9cm  
(17.1 x 4.35 x 15.3in.)  
6.25kg (13lb 12oz)  
7.8kg (17lb 3oz)

Net weight  
Shipping weight  
Power Consumption at 120 VAC 60Hz

17W

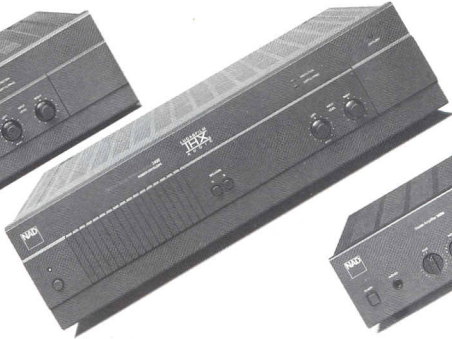
20W

30W



## 2100X Monitor Series Power Amplifier

- 60W RMS, POWER ENVELOPE TECHNOLOGY
- 330W DYNAMIC POWER
- +6dB IHF DYNAMIC HEADROOM
- INPUT LEVEL CONTROLS
- A, B, AND A + B SPEAKER SWITCHING
- ADAPTIVE SOFT CLIPPING™
- BRIDGEABLE
- LAB AND NORMAL INPUTS



## 2400THX Monitor Series Power Amplifier

- 100W RMS, POWER ENVELOPE TECHNOLOGY
- 440W DYNAMIC POWER
- +5.7dB IHF DYNAMIC HEADROOM
- INPUT LEVEL CONTROLS
- A, B, AND A + B SPEAKER SWITCHING
- ADAPTIVE SOFT CLIPPING™
- BRIDGEABLE
- LAB AND NORMAL INPUTS
- CERTIFIED FOR THX HOME THEATER USE BY LUCAS FILM LTD.



## 3020i Integrated Amplifier

- 20W RMS
- +3dB DYNAMIC HEADROOM
- SOFT CLIPPING™
- DISCRETE 4 TRANSISTOR PHONO PREAMP
- SPEAKER IMPEDANCE SELECTOR
- PRE-OUT/MAIN-IN
- 5-WAY SPEAKER BINDING POSTS
- GOLD-FLASHED PHONO INPUT JACKS



## 3225PE Integrated Amplifier

- 25W RMS, POWER ENVELOPE TECHNOLOGY
- 85W DYNAMIC POWER
- +4dB IHF DYNAMIC HEADROOM
- SOFT CLIPPING™
- DISCRETE 4 TRANSISTOR PHONO PREAMP
- SPEAKER IMPEDANCE SELECTOR
- PRE-OUT/MAIN-IN
- 5-WAY SPEAKER BINDING POSTS
- GOLD-FLASHED PHONO INPUT JACKS



## 3240PE Integrated Amplifier

- 40W RMS, POWER ENVELOPE TECHNOLOGY
- 200W DYNAMIC POWER
- +6dB IHF DYNAMIC HEADROOM
- SOFT CLIPPING™
- SPEAKER IMPEDANCE SELECTOR
- PRE-OUT/MAIN-IN
- 5-WAY SPEAKER BINDING POSTS
- BASS EQ
- INFRASONIC FILTERING
- GOLD-FLASHED PHONO INPUT JACKS

60W (17dBW)	100W (20dBW)	20W (13dBW)	25W (14dBW)	40W (16dBW)
0.03%	0.03%	0.03%	0.03%	0.03%
70W	130W	30W	40W	50W
+ 5.5dB	+ 5.7dB	+ 3dB	+ 4dB	+ 6dB
200W (23dBW)	370W (25.7dBW)	40W (16dBW)	60W (18dBW)	160W (22dBW)
250W (24dBW)	400W (26dBW)	40W (16dBW)	85W (19dBW)	200W (23dBW)
330W (25dBW)	440W (26.4dBW)	50W (17dBW)	90W (19.5dBW)	250W (24dBW)
>100	>100	>30	>50	>50
		R=47kΩ, C=100pF	R=47kΩ, C=100pF	R=47kΩ, C=100pF
		2.4mV ref. 20W	2.5mV ref. 25W	3.2mV for 40W
		75dB ref. 5mV	75dB ref. 5mV	76dB ref. 5mV
		<0.04%	<0.04%	<0.04%
		±0.5dB	±0.5dB	±0.5dB
10kΩ + 600pF	20kΩ + 600pF	R=40kΩ, C=100pF	R=40kΩ, C=100pF	R=15kΩ, C=100pF
0.85V	1.0V	150mV ref. 20W	160mV ref. 25W	160mV ref. 40W
100/117dB ref. 1W/50W	98/118dB ref. 1W/100W	87dB ref. 1W	85dB ref. 1W	88dB ref. 1W
		100dB ref. 20W	99dB ref. 25W	104dB ref. 40W
		+0.5, -1.0dB	+0.5, -1.0dB	+0.5dB
		-3dB at 12Hz, 18dB/octave (fixed)	-3dB at 15Hz, 24dB/octave (fixed)	-3dB at 12Hz, 12dB/octave (switchable)
<0.03%	<0.03%	0.01%	0.01%	0.01%
		600Ω	600Ω	600Ω
		Source Z + 2000Ω	Source Z + 2000Ω	Source Z + 2000Ω
		220Ω	220Ω	220Ω
		12V	12V	12V
		10V	10V	10V
		>10V into 600Ω	>10V into 600Ω	>10V into 600Ω
		>500mV into 8Ω	>500mV into 8Ω	>500mV into 8Ω
43.5 x 10.6 x 38.9cm	43.5 x 12.7 x 38.9cm	42 x 9.1 x 27cm	42 x 9.1 x 27cm	42 x 10.8 x 38cm
(17.1 x 4.2 x 15.3in.)	(17.1 x 5 x 15.3in.)	(16.5 x 3.6 x 10.6in.)	(16.5 x 3.6 x 10.6in.)	(16.5 x 4.26 x 15in.)
9.52kg (21lb)	10kg (22lb)	5.55kg (12lb 2oz)	5.55kg (12lb 2oz)	6.7kg (14lb 12oz)
10.88kg (25lb)	12.02kg (26lb 8oz)	6.4kg (14lb 2oz)	6.4kg (14lb 2oz)	8kg (17lb 10oz)
330W	390W	150W	150W	230W



### 4225 Tuner

- ULTRA-LINEAR I.F. FILTERS
- SWITCHABLE BLEND CIRCUIT
- S/N RATIO >75dB (STEREO)
- 14 RANDOM AM/FM PRESETS

### 4100 Monitor Series Tuner

- ULTRA-LINEAR I.F. FILTERS
- SWITCHABLE BLEND CIRCUIT
- S/N RATIO >75dB (STEREO)
- 14 RANDOM AM/FM PRESETS

### 7020i Receiver

- 20W RMS
- +3dB DYNAMIC HEADROOM
- SOFT CLIPPING™
- PRE-OUT/MAIN-IN
- SPEAKER IMPEDANCE SELECTOR
- 5-WAY SPEAKER BINDING POSTS
- GOLD-FLASHED PHONO INPUT JACKS

## SPECIFICATIONS

CONTINUOUS AVERAGE POWER OUTPUT INTO 8 OHMS (Min. power per channel, 20Hz - 20kHz, both channels driven, with no more than rated distortion). Rated Distortion (THD 20Hz - 20kHz) Clipping power at 8 ohms, 1kHz (maximum continuous power per channel) IHF dynamic headroom at 8 ohms IHF dynamic power (maximum short term power per channel)		8 ohms 4 ohms 2 ohms			20W (13dBW)  0.03% 30W  +3dB 40W(16dBW) 40W(16dBW) 50W(17dBW) >30
Damping Factor 8Ω/50Hz					
PREAMPLIFIER SECTION PHONO INPUT Input impedance Input sensitivity, 1kHz Signal/Noise ratio (A-weighted with cartridge connected)		MM: MC: MM: MC:			R=47kΩ, C=100pF 2.4mV ref. 20W 75dB ref. 5mV
THD (20Hz - 20kHz) and IM dist RIAA response accuracy					<0.04% ±0.5dB
LINE LEVEL INPUTS (Tuner, CD, Aux, Video, Tape) Input impedance Input sensitivity Signal/Noise ratio, A-weighted					R=40kΩ, C=100pF 150mV ref. 20W 87dB ref. 1W 100dB ref. 20W +0.5, -1.0dB -3dB at 12Hz, 18dB/octave (fixed)
Frequency response, 20Hz - 20kHz Infrasonic filter					
THD					
LINE LEVEL OUTPUTS Output impedance		Pre Out Tape Source Phones			600Ω Source Z + 2000Ω 220Ω
Maximum output level		Pre Out Tape Phones			12V 10V > 10V into 600Ω > 500mV into 8Ω
FM TUNER SECTION Input sensitivity		Mono, -30dB THD+N Mono, 50dB S/N Stereo, 50dB S/N Stereo, 60 dB S/N	11.3dBf (2.0μV/300Ω) 37dBf(40μV/300Ω)	11.3dBf (1.0μV/75Ω) 37dBf (20μV/75Ω)	11.3dBf (2.0μV/300Ω) 15dBf (3.0μV/ 300Ω) 37dBf (40μV/300Ω)  47dBf (120μV/300Ω)
Capture ratio (45 and 65dBf) Selectivity Subcarrier suppression (19 and 38kHz) THD at 100% modulation		Alternate channel  Mono, 1kHz Stereo, 1kHz	<2.0dB 65dB 60dB 0.09%	<2.0dB 65dB 60dB 0.09%	< 1.5dB 58dB 60dB 0.1%
Signal/Noise ratio (at 65dBf, IHF weighted)		Mono Stereo	>80dB > 75dB	>80dB >75dB	> 80dB > 74dB
Frequency response, 30Hz - 15kHz Stereo separation, FM NR off		1kHz	± 0.5dB 50dB	± 0.5dB 50dB	± 0.5dB 45dB
AM TUNER SECTION Useable sensitivity Selectivity Image rejection Signal/Noise ratio (30% modulation, 50mV input) THD			5μV 30dB 35dB 45dB 0.3%	5μV 35dB 30dB 45dB 0.3%	5μV 30dB 45dB 45dB 0.5%
PHYSICAL SPECIFICATIONS Dimensions (Width x Height x Depth)			42 x 7.62 x 25cm (16.5 x 3 x 10in.)	43.5 x 8.1 x 26.3cm (17.1 x 3.2 x 10.3 in.)	42 x 9.1 x 27.3cm (16.5 x 3.2 x 10.75in.)
Net weight			3.2kg (7lb 1oz)	3.4kg (7lb 8oz)	5.5kg (12lb 2oz)
Shipping weight			4.1kg (9lb 1oz)	4.4kg (9lb 11oz)	6.8kg (15lbs)
Power Consumption at 120 VAC 60Hz			10W	10W	150W



### 7225PE Receiver

- 25W RMS, POWER ENVELOPE TECHNOLOGY
- 85W DYNAMIC POWER
- +4.4dB IHF DYNAMIC HEADROOM
- SOFT CLIPPING™
- PRE-OUT/MAIN-IN
- SPEAKER IMPEDANCE SELECTOR
- 5-WAY SPEAKER BINDING POSTS
- GOLD-FLASHED PHONO INPUT JACKS

### 7240PE Receiver

- 40W RMS, POWER ENVELOPE TECHNOLOGY
- 200W DYNAMIC POWER
- +6dB IHF DYNAMIC HEADROOM
- SOFT CLIPPING™
- PRE-OUT/MAIN-IN
- 5-WAY SPEAKER BINDING POSTS
- BASS EQ
- SPEAKER IMPEDANCE SELECTOR
- FM NOISE REDUCTION

### 7000 Monitor Series Receiver

- 40W RMS, POWER ENVELOPE TECHNOLOGY
- 200W DYNAMIC POWER
- +6dB IHF DYNAMIC HEADROOM
- SOFT CLIPPING™
- PRE-OUT/MAIN-IN
- 5-WAY SPEAKER BINDING POSTS
- BASS EQ
- SPEAKER IMPEDANCE SELECTOR
- MM/MC SWITCH ON DISCRETE 4 TRANSISTOR PHONO PREAMP
- GOLD-FLASHED PHONO INPUT JACKS
- FM BLEND
- 14 RANDOM AM & FM PRESETS
- FULL FUNCTION REMOTE CONTROL

### 7100X Monitor Series Receiver

- 60W RMS, POWER ENVELOPE TECHNOLOGY
- 330W DYNAMIC POWER
- +6dB IHF DYNAMIC HEADROOM
- ADAPTIVE SOFT CLIPPING™
- PRE-OUT/MAIN-IN
- BASS EQ
- SPEAKER IMPEDANCE SELECTOR
- BRIDGEABLE WITH 2100X
- MM /MC SWITCH ON DISCRETE 4 TRANSISTOR PHONO PREAMP
- GOLD PLATED PHONO INPUT JACKS
- FM NOISE REDUCTION
- 14 RANDOM AM & FM PRESETS
- FULL FUNCTION REMOTE CONTROL

### 7400 Monitor Series Receiver

- 100W RMS, POWER ENVELOPE TECHNOLOGY
- 440W DYNAMIC POWER
- +5.7dB IHF DYNAMIC HEADROOM
- ADAPTIVE SOFT CLIPPING™
- PRE-OUT/MAIN-IN
- SEMI PARAMETRIC TONE CONTROLS
- BASS EQ
- SPEAKER IMPEDANCE SELECTOR
- BRIDGEABLE WITH 2400THX
- MM /MC SWITCH ON DISCRETE 4 TRANSISTOR PHONO PREAMP
- GOLD PLATED PHONO INPUT JACKS
- FM NOISE REDUCTION
- 14 RANDOM AM & FM PRESETS
- FULL FUNCTION REMOTE CONTROL



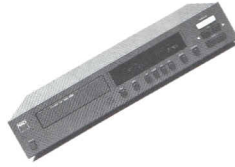
25W (14dBW)	40W (16dBW)	40W	60W	100W
0.03% 40W	0.03% 50W	0.03% 50W	0.03% 70W	0.03% 130W
+4dB 60W (18dBW) 85W (19dBW) 90W (19.5dBW) >50	+6dB 160W(22dBW) 200W(23dBW) 250W(24dBW) >50	+ 6dB 160W (22dBW) 200W (23dBW) 250W (24dBW) >50	+ 5.5dB 200W(23dBW) 250W(23dBW) 330W(24dBW) >100	+5.7dB 370W (25.7dBW) 400W (26dBW) 440W (26.4dBW) >100
R=47kΩ, C=100pF 2.5mV ref. 25W 75dB ref. 5mV	R=47kΩ, C=300pF 3.2mV ref. 40W 76dB ref. 5mV	47kΩ, + 100pF 0.35mV / 40W out 75dB ref. 5mV	47kΩ, + 100pF 0.35mV/40W out 75dB ref. 5mV	47kΩ, + 120pF 0.28mV /100W out 75dB ref. 5mV
<0.04% ±0.5dB	<0.04% ±0.5dB	<0.04% ± 0.5dB	<0.04% ±0.5dB	<0.04% ±0.5dB
R=40kΩ, C=100pF 160mV ref. 25W 85dB ref. 1W 99dB ref. 25W +0.5, -1.0dB -3dB at 15Hz, 24dB/octave (fixed)	R=15kΩ,C=100pF 160mV ref. 40W 88dB ref. 1W 104dB ref. 40W +0.5dB -3dB at 12Hz, 12dB/octave (switchable)	50kΩ + 500pF 80mV 88/104dB ref. 1W/40W ± 0.5dB - 3dB at 12Hz/12 dB/octave	50kΩ + 500pF 20mV/150mV 94/111dB ref. 1W/50W ± 0.5dB - 3dB at 12Hz/12dB/octave (switchable)	50kΩ + 250pF 15mV/150mV 96/116dB ref. 1W/100W ± 0.3dB - 3dB at 12Hz/12dB/octave (switchable)
600Ω Source Z + 1000Ω 220Ω 12V 10V > 10V into 600Ω > 500mV into 8Ω	600Ω Source Z + 2000Ω 220Ω 12V 8V > 10V into 600Ω > 500mV into 8Ω	500Ω 100Ω(buffered)  >10V >8V into 600Ω >500mV into 8Ω	500Ω 100Ω(buffered)  >10V >8V into 600Ω >500mV into 8Ω	600Ω 1000Ω(buffered)  >10V >8V into 600Ω >500mV into 8Ω
11.3dBf (2.0μV/300Ω) 15dBf (3.0μV/300Ω) 37dBf (40μV/300Ω)  47dBf (120μV/300Ω)	10.3dBf (1.8μV/300Ω) 14.2dBf (2.8μV/300Ω) 36dBf (34μV/300Ω) FM NR off 29dBf (16μV/300Ω) FM NR on 46dBf (110μV/300Ω) FM NR off 40dBf (56μV/300Ω) FM NR on	11dBf (1.0μV/75Ω) 36dBf(17μV/75Ω)	11.3dBf (1.0μV/75Ω) 26dBf (5.5μV/75Ω) FM NR on 36dBf (18μV/75Ω) FM NR off	10.3dBf (1.0 μV/75Ω) 25dBf (5μV/75Ω) FM NR on 35dBf (15μV/75Ω) FM NR off
< 1.5dB 58dB 60dB 0.1% 0.1% >80dB > 74dB ± 0.5dB 45dB	< 1.5dB 65dB 60dB 0.09% 0.09% > 80dB > 75dB ± 0.5dB 50dB	<1.6dBf 68dB 60dB <0.1% <0.1% 82dB 76dB ± 0.5dB 50dB	<1.6dBf 70dB 65dB 0.1% 0.09% 82dB 78dB ± 0.5dB 50dB	< 1.5dBf 70dB 60dB <0.08% <0.1% 82dB 78dB ± 0.5dB 50dB
5μV 30dB 45dB 45dB 0.5%	300μV/meter 35dB 50dB 45dB 0.5%	5μV 35dB 50dB 45dB 0.5%	300μV/meter 35dB 50dB 45dB 0.5%	300μV/meter 35dB 50dB 45dB 0.5%
42 x 9.1 x 27.3cm (16.5 x 3.2 x 10.75in.) 5.5kg (12lb 2oz) 6.8kg (15lbs) 150W	42 x 10.8 x 38cm (16.5 x 4.25 x 15in.) 7.5kg (16lb 9oz) 9kg (19lb 13oz) 240W	43.5 x 10.6 x 38.9cm (17.1 x 4.2 x 15.3in.) 8.2kg (18lb 1oz) 10kg (22lb) 250W	43.5 x 10.6 x 38.9 cm (17.1 x 4.2 x 15.3in.) 11kg (24lb 7oz) 12.7kg (28lb 3oz) 330W	43.5 x 12 x 38.9cm (17.1 x 4.75 x 15.3in.) 11.8kg (26lb) 13.6kg (30lb) 390W

## Compact Disc Players



### 5420/25 Compact Disc Player

- BALANCED MASH 'ONE-BIT' HIGH RESOLUTION DIGITAL TO ANALOGUE CONVERTER
- PLAYS 3-INCH DISCS WITHOUT ADAPTOR
- 16 TRACKS PROGRAMMABLE
- REMOTE CONTROL WITH 5425



### 5440 Compact Disc Player

- BALANCED MASH 'ONE-BIT' HIGH RESOLUTION DIGITAL TO ANALOGUE CONVERTER
- CDR (CONTROLLED DYNAMIC RANGE) CIRCUIT OPTIMIZES DYNAMIC RANGE IN DIGITAL DOMAIN FOR LATE NIGHT LISTENING OR CASSETTE RECORDING
- BOTH LOW IMPEDANCE FIXED AND VARIABLE OUTPUTS
- INFRA-RED REMOTE CONTROL WITH DIRECT TRACK ACCESS AND VOLUME CONTROL
- SERIAL DIGITAL OUTPUT



### 5000 Monitor Series Compact Disc Player

- BALANCED MASH 'ONE-BIT' HIGH RESOLUTION DIGITAL TO ANALOGUE CONVERTER
- CDR (CONTROLLED DYNAMIC RANGE) CIRCUIT OPTIMIZES DYNAMIC RANGE IN DIGITAL DOMAIN FOR LATE NIGHT LISTENING OR CASSETTE RECORDING
- BOTH LOW IMPEDANCE FIXED AND VARIABLE OUTPUTS
- FULL FUNCTION REMOTE CONTROL
- SERIAL DIGITAL OUTPUT
- POWERFUL HEADPHONES AMP, WITH VOLUME CONTROL, DELIVERS 6V RMS



### 5060 Monitor Series Compact Disc Player

- MULTIPLE CD CHANGER
- 6-DISC MAGAZINE
- RANDOM PLAYBACK
- AUTO PAUSE
- REMOTE CONTROL
- MULTI-STAGE PWM DIGITAL TO ANALOGUE CONVERTER

## SPECIFICATIONS

<b>Disc capacity</b>	Single disc, 120 or 80mm	Single disc, 120 or 80mm	Single disc, 120 or 80mm	6 discs, 120mm (80mm with adaptor)
<b>Programming capacity</b>	16 tracks	20 tracks	20 tracks	32 tracks
<b>Digital-to-Analogue conversion</b>	MASH, 18-bit resolution 32 times oversampled, linear phase with 18 bit coefficients	MASH, 18-bit resolution 32 times oversampled, linear phase with 18 bit coefficients	MASH, 18-bit resolution 32 times oversampled, linear phase with 18 bit coefficients	16 bit linear dual DAC 104 point linear phase, 2 stage
<b>Analogue filter</b>	5 pole active	5 pole active	5 pole active	3 pole active
<b>Frequency response 5Hz - 20kHz</b>	0/-0.5dB	+/-0.2dB	+/-0.2dB	+0.2dB - 0/-0.5dB
<b>De-emphasis error</b>	<-0.3dB	<-0.2dB	<-0.2dB	<-0.5dB
<b>THD (at 0dB, 1kHz)</b>	0.0025%	0.002%	0.002%	0.035%
<b>Dynamic range</b>	98dB	98dB	98dB	94dB
<b>Linearity</b>	+0.5dB; 0 to -90dB	+0.5dB; 0 to -90dB	+0.5dB; 0 to -90dB	+1dB ar -90dB
<b>Signal/Noise ratio (A-weighted, measured with all zeroes test disc)</b>	106dB	>106dB	>106dB	106dB
<b>Channel separation</b>	100dB	>100dB	>100dB	95dB
<b>Wow and flutter</b>	Unmeasurable (quartz accuracy)	Unmeasurable (quartz accuracy)	Unmeasurable (quartz accuracy)	Unmeasurable (quartz accuracy)
<b>Output impedance</b>	120Ω	120Ω	120Ω	470Ω
<b>Output level at 0dB</b>	2.0V rms	2.0V rms (fixed), 5V rms (variable)	2.0V rms (fixed), 5V rms (variable)	2.0V rms
<b>Digital error correction</b>	CIRC with double error correction in C1 and C2	CIRC with double error correction in C1 and C2	CIRC with double error correction in C1 and C2	CIRC with double error correction in C1 and C2
<b>Noise at zero volume</b>	<-120dB	<-120dB	<-120dB	NO
<b>Digit code output</b>	NO	Sony/Philips aerial data format	Sony/Philips aerial data format	YES
<b>Remote control unit</b>	5425-YES	YES	YES	YES
<b>PHYSICAL SPECIFICATIONS</b>				
<b>Dimensions (Width x Height x Depth)</b>	42.0 x 8.4 x 26.0cm (16.5 x 3.3 x 10.2in.)	42.0 x 8.4 x 30.0cm (16.5 x 3.3 x 11.8in.)	43.5 x 8.1 x 30.0cm (17.1 x 3.3 x 11.8in.)	43.5 x 11.5 x 37.7cm (17.1 x 4.5 x 14.3in.)
<b>Net weight</b>	5420 - 4.10kg (9lb 1oz) 5425 - 4.15kg (9lb 2oz)	4.10kg (9lb 1oz)	4.25kg (9lb 4oz)	7.1kg (15lb 9oz)
<b>Shipping weight</b>	5420 - 4.65kg (10lb 4oz) 5425 - 4.70kg (10lb 6oz)	5.0kg (11lb)	5.15kg (11lb 4oz)	8.4kg (18lb 5oz)
<b>Power Consumption at 120 VAC 60Hz</b>	25W	16W	17W	20W

## Cassette Decks



### 6325 Cassette Deck

- DOLBY™ B & C
- CAR CIRCUIT OPTIMIZES RECORDING FOR MOBILE ENVIRONMENT
- PLAY TRIM
- FULL LOGIC TRANSPORT



### 6340 Cassette Deck

- DOLBY™ B & C
- DOLBY HX PRO™
- DYNEQ™
- CAR CIRCUIT OPTIMIZES RECORDING FOR MOBILE ENVIRONMENT
- PLAY TRIM
- FULL LOGIC TRANSPORT



### 6100 Monitor Series Cassette Deck

- DOLBY™ B & C
- DOLBY HX PRO™
- DYNEQ™
- CAR CIRCUIT OPTIMIZES RECORDING FOR MOBILE ENVIRONMENT
- PLAY TRIM
- FULL LOGIC TRANSPORT
- REMOTE CONTROL

## SPECIFICATIONS

<b>Speed Accuracy</b>	+1%	+1%	+1%	+1%
<b>Wow and Flutter</b>	< 0.06% JIS wrd. RMS	< 0.06% JIS wrd. RMS	< 0.06% JIS wrd. RMS	< 0.06% JIS wrd. RMS
<b>Frequency Response</b>	< 0.1% DIN wrd. peak	< 0.1% DIN wrd. peak	< 0.1% DIN wrd. peak	< 0.1% DIN wrd. peak
<b>(Dolby NR off)</b>	35Hz- 16kHz +3dB	30Hz- 19kHz +3dB	30Hz- 19kHz +3dB	30Hz- 19kHz +3dB
<b>MPX Filter Response</b>		(MPX filter off)	(MPX filter off)	(MPX filter off)
<b>Harmonic Distortion</b>		Flat within 1dB to 15kHz	Flat within 1dB to 15kHz	Flat within 1dB to 15kHz
<b>THD at 0dB</b>	Varies with recording level; typically < 0.3% at -10dB	Varies with recording level; typically < 0.3% at -10dB	Varies with recording level; typically < 0.3% at -10dB	Varies with recording level typically < 0.3% at -10dB
	< 1.0%	< 1.0%	< 1.0%	< 1.0%
	< 1.5%	< 1.5%	< 1.5%	< 1.5%
<b>Signal-to-Noise Ratio</b>	56dB (Dolby off)	57dB (Dolby off)	57dB (Dolby off)	57dB (Dolby off)
<b>(ref. 3% THD at 333Hz)</b>	66dB (Dolby B)	67dB (Dolby B)	67dB (Dolby B)	67dB (Dolby B)
<b>CC1R/ARM weighting)</b>	76dB (Dolby C)	77dB (Dolby C)	77dB (Dolby C)	77dB (Dolby C)
<b>Channel Separation</b>	40dB at 1kHz	45dB at 1kHz	45dB at 1kHz	45dB at 1kHz
	35dB broadband	38dB broadband	38dB broadband	38dB broadband
<b>Erasure</b>	> 70dB at 1kHz	> 70dB at 1kHz	> 70dB at 1kHz	> 70dB at 1kHz
<b>Input Sensitivity / Impedance</b>	40mV/10k	40mV/10k	40mV/10k	40mV/10k
<b>Maximum input level</b>	25V	25V	25V	25V
<b>Output level at 0dB</b>	500mV	500mV	500mV	500mV
<b>Output impedance</b>	1000Ω	1000Ω	1000Ω	1000Ω
<b>PHYSICAL SPECIFICATIONS</b>				
<b>Dimensions (Width x Height x Depth)</b>	42 x 12.2 x 27cm (16.5 x 4.8 x 10.6in.)	42 x 12.2 x 27cm (16.5 x 4.8 x 10.6in.)	43.5 x 12 x 27.3cm (17.1 x 4.75 x 10.75in.)	43.5 x 12 x 27.3cm (17.1 x 4.75 x 10.75in.)
<b>Net Weight</b>	4.42kg (9lb 12 oz)	4.5kg (9lb 15 oz)	4.6kg (10lb 1oz)	4.6kg (10lb 1oz)
<b>Shipping Weight</b>	6.26kg (13lb 13oz)	6.2kg (13lb 11oz)	6.4kg (14lb 1oz)	6.4kg (14lb 1oz)
<b>Power Consumption at 120 VAC 60Hz</b>	22W	22W	22W	22W

# GLOSSARY

## POWER AMPLIFIER TECHNOLOGY

**POWER ENVELOPE:** Provides NAD amplifiers and receivers power bursts up to four times their "rated" continuous power. Imagine, for slightly more than you would pay for an ordinary 50W/Ch receiver, you can have a receiver which can reproduce music as clearly as a conventional receiver rated at 200W/Ch. This not only saves you money, but also saves your speakers from damage due to pushing a receiver too hard.

**BUILDING BLOCK CONCEPT:** Most NAD products have preamp-out/main-in and/or bridging capabilities. This allows for easy upgrade possibilities in the future, even with the simplest receiver. Your investment never becomes obsolete.

**SOFT CLIPPING:** This NAD circuit gently rounds off the musical wave form when an amplifier or receiver is driven too hard, reducing the possibility of damage to your speakers.

**HIGH CURRENT CAPABILITY:** Provides the control needed for dynamic well defined reproduction of music with difficult speaker loads such as multiple speakers, electrostatics or other unusual designs.

## PREAMPLIFIER TECHNOLOGY

**BASS EQ:** Boosts only the lowest bass by 6-8 dB, compensating for the natural roll-off found in most bookshelf speakers, thereby giving an extra 1/2 to 2/3 of an octave of deep bass. *Example: It's like trading in an 8" woofer for a 10" woofer, without getting boomy.*

**MUSICALLY USEFUL TONE CONTROLS:** Provides the ability to control the extremes (high and low) without effecting the midrange. Allows you to boost the lowest bass without altering a male voice, or add sparkle to the highs without distorting a female voice.

**LOW PHONO SIGNAL-TO-NOISE:** NAD's preamps are designed for actual use, rather than good specs alone (as are all of our products). If you listen to a lot of records, you will find greater enjoyment out of them when played through our quieter preamps.

## TUNER TECHNOLOGY

**FM NOISE REDUCTION:** Dramatically improves the listenability of weak FM stereo signals. FM NR provides a 10 dB improvement in signal-to-noise ratio (approximately the same result as Dolby B NR for tapes), thus requiring about half the signal strength for the tuner to achieve acceptably quiet reception.

**SELECTABLE I.F. BANDWIDTH:** NAD tuners offer wide bandwidth for getting low distortion and wide stereo separation from FM broadcasts and effective rejection of multipath interference. However, in crowded areas, weak signals may be hidden by stronger ones. I.F. Narrow helps to provide sharper selectivity for these crowded dial conditions.

**WIDEBAND AM:** The AM Circuits were designed especially for digital tuners. Their freedom from noise and static make it surprisingly pleasant to listen to, and, unlike most stereo tuners, their unusually wide bandwidths provide very clear sound.

## CASSETTE DECK TECHNOLOGY

**PLAY TRIM:** Developed by Dolby laboratories with NAD, Play Trim compensates for high frequency loss before Dolby NR, restoring highs without increasing noise. *Example: Take an old tape with dulled highs and turn the Play Trim knob and note the restored highs.*

**HX PRO AND DYNEQ:** DYNEQ varies the record equalization to prevent over saturation when strong high frequency transients occur. HX PRO varies the bias supplied to the tape during recording to maintain optimum high frequency response at all times, thus making a much more accurate reproduction of your source. *Note: HX PRO and DYNEQ are compatible for playback with all cassette decks, including car decks.*

**CAR CIRCUIT:** Boosts quiet passages in the music without altering the loud passages, making a more practical tape for car or portable players. It also adds equalization for the car environment.

## COMPACT DISC TECHNOLOGY

**CDR - CONTROLLED DYNAMIC RANGE:** Raises the volume level of the quietest portions of music, without limiting the dynamic peaks. This allows all the music to be heard all the time. Perfect for use as background music, or for making tapes for the car if you don't own a NAD cassette deck.

**MASH "ONE BIT" DECODING:** With CD players utilizing MASH or other one bit technologies, our engineers have found that what really makes the difference in their performance is the care taken in power supply design, PCB layout, grounding, and selection of analog circuit components.

**CIRCUIT SIMPLICITY:** Many CD players are "over-designed" with unnecessary stages of analog circuitry that sacrifice transparency and subtle detail. NAD players have just three wide-band analog circuits and only one coupling capacitor in the signal path (bypassed by a low-loss film capacitor), thus preserving the emotional detail of the original performance.

**NAD**

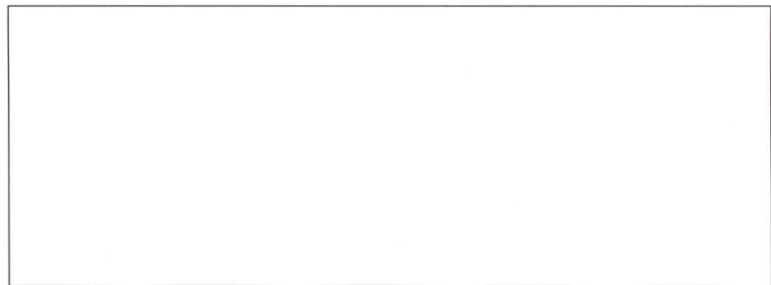
## **AN UNCOMMON COMPANY**

**A**chieving imposing specification is not a primary goal of NAD. Our engineers step outside of the laboratory to study actual listening environments and the effects of interaction between components in a complete audio system. No compromises whatsoever are made in the design areas which directly affect performance in real-use conditions. Every NAD component is designed for maximum efficiency and effectiveness. Furthermore, NAD offers the best possible performance sound quality regardless of power rating or price.

NAD's organization is as unconventional as its product philosophy. NAD dealers and distributors from over 45 countries participate in planning sessions at local and international conferences. Working closely with our engineers and consultants, they develop the new products and concepts that make NAD components so unique. By eliminating many expenses generally associated with large audio manufacturing companies, NAD has been successful in greatly increasing the value of its products. Unlike most companies that spend over 40% of their product budget on overhead and advertising, NAD spends less than 10% on these elements. Most of the NAD budget is devoted to research, engineering and manufacturing.

From all over the world, NAD has invited the leading experts in each aspect of audio technology to participate in creating an NAD product. We believe it is this combination of an uncommon company with an uncommon philosophy which results in a series of technically impressive products that have become "classics" in their own time.

To see and hear the products shown in this catalog, and for more detailed specifications and literature describing these and other fine products in NAD's unique line of home entertainment components, we suggest that you visit your local NAD dealer.



Notice to all customers:

Certain NAD models may not be available in all countries.

Multi-voltage option not available on many models.

Please consult your dealer for details.

All specifications are those in effect at the time of printing.

NAD reserves the right to change specifications or designs at any time without notice.

NAD Electronics Ltd., London.

Printed in Canada